

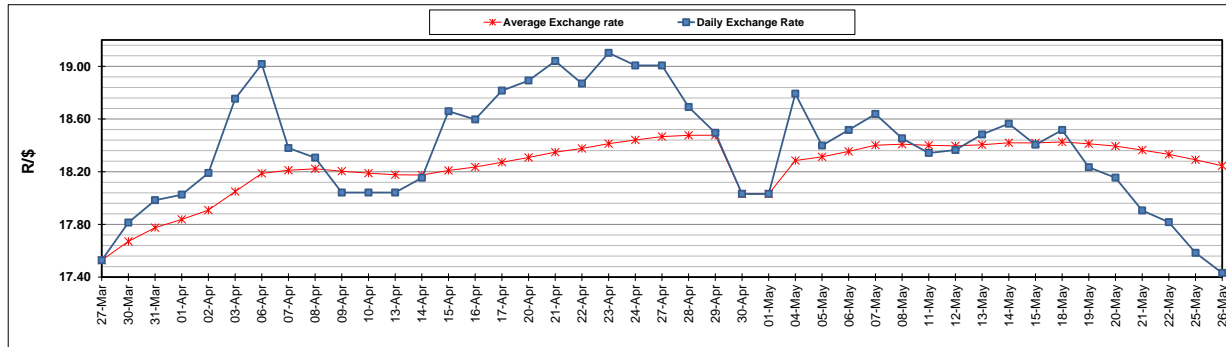
	PETROL 95 ULP	PETROL 93 ULP & LRP	DIESEL 0.05%	DIESEL 0.005%	ILL. PAR.
GAUTENG PUMP PRICE (SA c/l) AS FROM 06/05/2020	1,222.000	1,202.000	-	-	-
WHOLESALE PRICE (SA c/l) AS FROM 06/05/2020	-	-	1,108.560	1,117.960	449.828
SINGLE NATIONAL MAXIMUM RETAIL PRICE	-	-	-	-	543.000
BASIC FUEL PRICE - 26/05/2020 (SA c/l)	472.327	450.764	473.826	480.239	439.376
PRESS RELEASE CONTRIBUTION TO BFP 06/05/2020 - 26/05/2020 (SA c/l)	274.770	264.770	357.630	367.030	245.128
UNIT OVER/(UNDER) RECOVERY - 26/05/2020 (SA c/l)	(197.557)	(185.994)	(116.196)	(113.209)	(194.248)
AVERAGE BASIC FUEL PRICE 30/04/2020 - 26/05/2020	423.884	405.020	405.207	413.755	318.965
AVERAGE UNIT OVER/(UNDER) RECOVERY 30/04/2020 - 26/05/2020	(112.483)	(103.618)	(13.682)	(13.883)	(26.890)

### ANALYSIS MOVEMENT OF AVERAGE OVER/(UNDER) RECOVERY

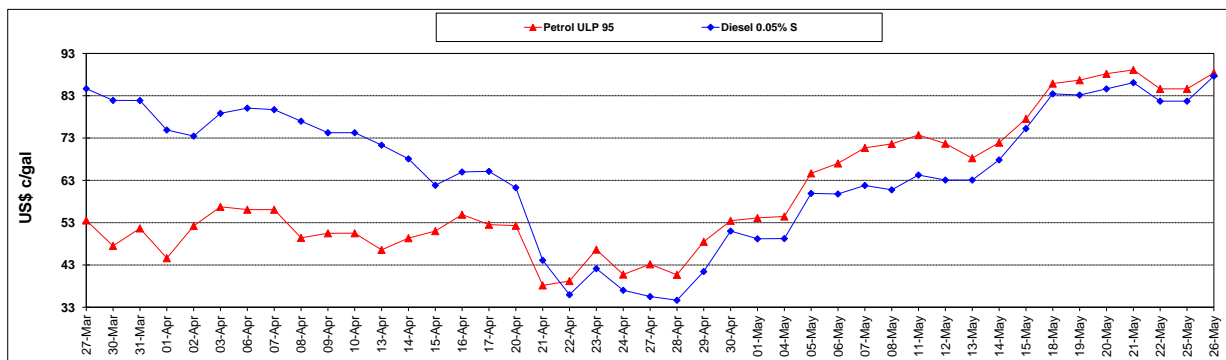
	PETROL 95	PETROL 93	DIESEL 0.05%	DIESEL 0.005%	ILL. PAR.
- MOVEMENT IN INTERNATIONAL PRODUCT PRICES	(117.865)	(108.761)	(18.828)	(19.137)	(30.941)
- MOVEMENT IN EXCHANGE RATE	5.383	5.143	5.146	5.254	4.051
AVERAGE UNIT OVER/(UNDER) RECOVERY 30/04/2020 - 26/05/2020	(112.483)	(103.618)	(13.682)	(13.883)	(26.890)

### R/\$ EXCHANGE RATE - (R/\$17.4315 - 26/05/2020)

#### EXCHANGE RATE USED IN BASIC FUEL PRICE



#### INTERNATIONAL PRODUCT PRICES OF BASKET USED IN BASIC FUEL PRICE



#### BASIC FUEL PRICE IN SA CENTS PER LITRE

